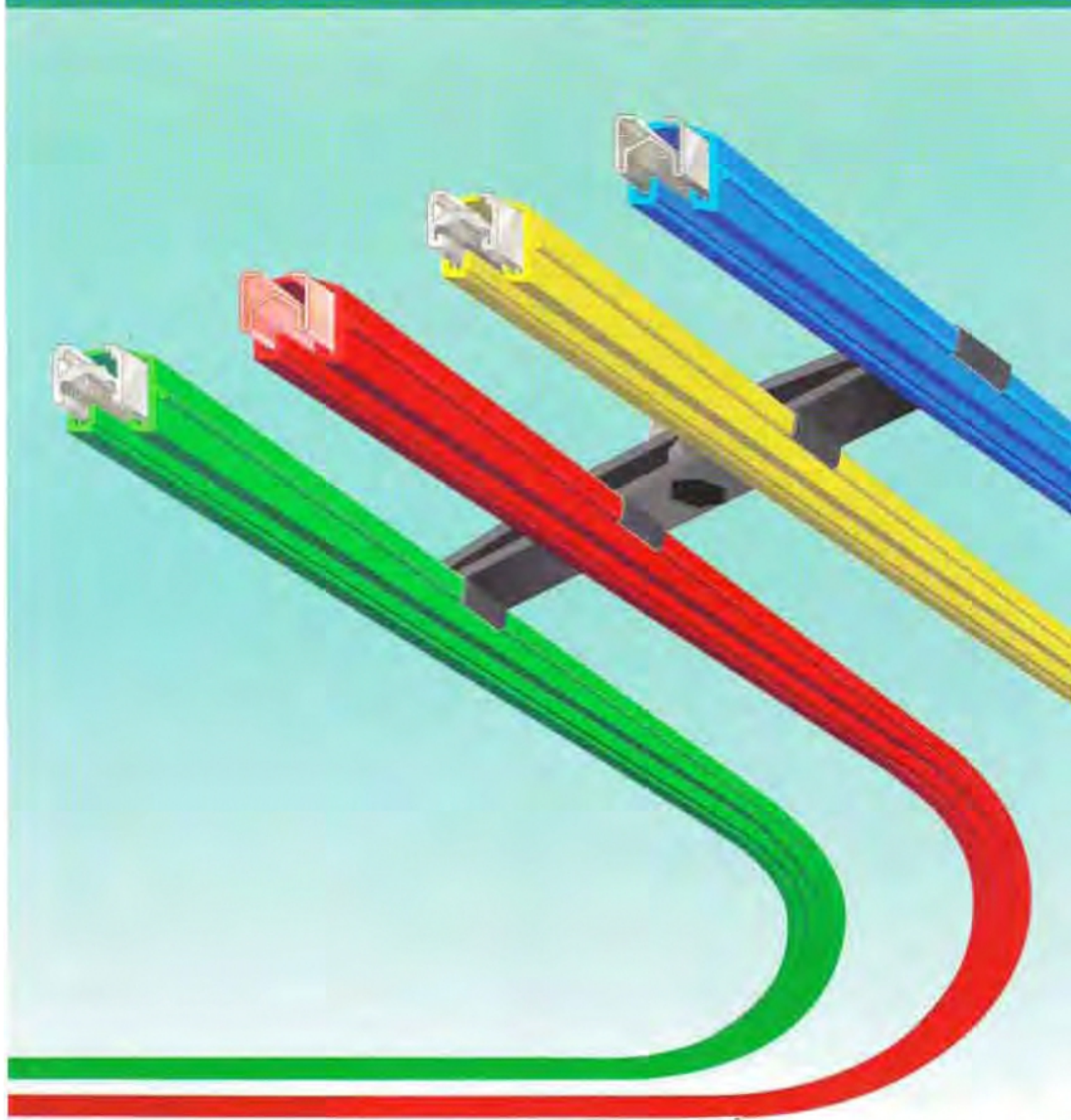
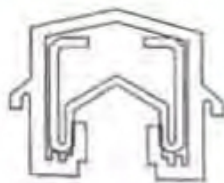


SafeTrack 2

COMPACT SHROUDED CONDUCTOR SYSTEM



ISO 9001 - 2000 CERTIFIED

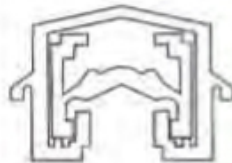


G.I./ Cu Conductor

SafeTrack 2 Insulated Conductors are designed in accordance to International Regulations for a multitude of Power Supply Applications.

The Conductors conform to IP21. These Conductors are Compact, Insulated and easy to instal.

V Contact design ensures Positive Contact. The Conductors are colour coded RYBG.



Al Conductor with S.S. Strip

They can be mounted in Horizontal or Vertical configuration.

The Conductor Bars are 4.5 Meters long to be supported at every one Meter.

Design allows Uni /Multi pole mounting arrangement. Conductors can be mounted side by side. Factory made Curved Conductors are available.



Joint Clip

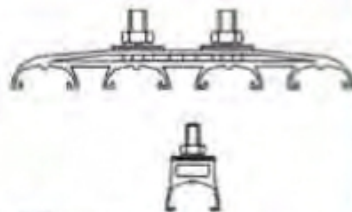
Bolted Joints are designed to rigidly join Conductor Bars. Two bolts on either side ensure Electrically and Mechanically strong Joint.

Double Bolted design provides Smooth and Perfect Alignment at Joints. This allows smooth glide of Collectors.



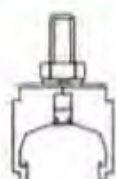
Joint Cover

Easy to fit, Snap on type. Insulated Joint Cover protects the Joint.



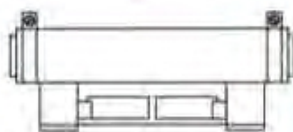
Hanger Clamp

Snap on Insulated Single and Four Pole Hanger Clamps designed for Horizontal / Vertical Installations.



Anchor Clamp

Plastic moulded Snap-on type with self anchoring feature. For use at Anchor Points.



Center Power Feed Kit



End Cap

The Power Feed point can be at either end or any where along the run. One or more Power Feed points are possible to reduce Voltage Drop.

The Open Ends / End Feeds of conductors are covered by End Caps.



Expansion Section



Transfer Funnel



Isolating Section

CURRENT COLLECTORS

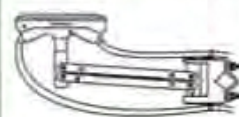
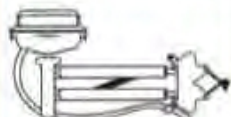
Heavy Duty Current Collectors are of fully Articulated Design.

This provides multi axis degree of movement thereby allowing compensation of machine motion tolerances and installation variation.

Spring Loaded unit provides positive pressure contact with conductors, thus ensures uninterrupted power transfer during motion.

Variety of designs for different applications and site conditions.




SafeTrack 2 Single Pole Current Collector Technical Data



Type	MMACC 60	DACC 125	MACC 125	MACC 250
Current Rating	60A	125A	125A	250A
Collector movement Horizontal Vertical	± 125 ± 50	± 50 ± 60	± 200 ± 60	± 200 ± 60
Mounting Bracket	16 sqmm bar	25 sqmm bar	25 sqmm bar	25 sqmm bar
Mounting Distance from conductor contact surface	100mm	127mm	127mm	127mm
Sintered Copper Shoe	125A	125A	125A	250A
Shoe Holder	Nylon	Nylon	Nylon	ABS
Structure	Metallic	Moulded	Metallic	Metallic

INSTALLATION SafeTrack 2 can be installed in most atmospheres such as dusty, humid, chemical / acidic etc.

MAINTENANCE COST No periodic maintenance is required. Only consumable item is contact shoe.

SafeTrack 2 SHROUDED CONDUCTOR TECHNICAL DATA SHEET									
CONDUCTOR		SF2-60A	SF2-100A	SF2-125A	SF2-160A	SF2-250A	SF2-400A	SF2-200A	SF2-315A
Material		Galvanised Steel			Copper			Aluminium with SS	
Cross Sectional Area (Thickness)		53 (0.8)	66 (1.0)	100(1.6)	53 (0.8)	66 (1.0)	100(1.6)	104	120
Impedence milli Ohms/M +35 °C		3.55	2.86	1.92	0.36	0.30	0.22	0.32	0.29
DC Resistance milli Ohms/M +35 °C		3.52	2.84	1.92	0.35	0.27	0.18	0.30	0.26
Co eff. Of Expansion / °C		1.26 x 10 ⁻⁵	1.26 x 10 ⁻⁶	1.26 x 10 ⁻⁵	1.62 x 10 ⁻⁵	1.62 x 10 ⁻⁵	1.62 x 10 ⁻⁵	2.38 x 10 ⁻⁵	2.38 x 10 ⁻⁵
Conductor Rating At +35 °C CDF 100%		60A	100A	125A	160A	250A	400A	200	315
80%		68A	112A	139A	180A	280A	445A	222	348
60%		80A	130A	162A	210A	325A	520A	258	405
40%		97A	160A	200A	255A	400A	635A	316	496
Conductor Rating at 100% CDF At +35 °C		60A	100A	125A	160A	250A	400A	200	315
+40 °C		58A	97A	121A	149A	233A	372A	184	290
+45 °C		56A	94A	117A	140A	218A	348A	162	255
+50 °C		54A	91A	113A	131A	205A	328A	152	240
+55 °C		52A	88A	110A	125A	195A	312A	136	215
Standard Conductor Length		4.5 Mtrs			4.5 Mtrs			4.5 Mtrs	
Track Configuration straight / curved Bending radius minimum Horizontal		1500 mm (Horz.only)			1500 mm (Horz.only)			N.A	
Conductor Joint		Bolted Type			Bolted Type			Bolted Type	
INSULATION									
Standard Insulation		PVC			PVC			PVC	
System working Temperature ?		80 °C			80 °C			80 °C	
Flame Test		Self Extinguishing			Self Extinguishing			Self Extinguishing	
Insulation Cover		RYBG			RYBG			RYBG	
Protection Class (Finger Safe)		IP21			IP21			IP21	
Maximum System Voltage		500V AC / 600V DC			500V AC / 600V DC			500VAC / 600V DC	
High Voltage withstand For 1min Flashover Test		2.5KV / 7.5KV			2.5KV / 7.5KV			2.5KV / 7.5KV	
INSTALLATION									
Support Pitch	Standard	1000 mm			1000 mm			1000 mm	
	Lateral	1000 mm			1000 mm			1000 mm	
On curved path		500 mm			500 mm				
Hanger Clamps		1pole / 4pole			1pole / 4pole			1pole / 4pole	
Minimum Pitch Centre 4P HC Fixed		43 mm			43 mm			43 mm	
1P HC		40 mm min			40 mm min			40 mm min	
Max distance between Anchor points		75 Mtrs			75 Mtrs			75 Mtrs	
Power Feeding		At joint or at any location/s			At joint or at any location/s			At joint or at any location/s	
Expansion section required for bay lengths more than		150 Mtrs			150 Mtrs			150 Mtrs	
Installation suitable for		Indoor / outdoor			Indoor / outdoor			Indoor / outdoor	
OTHER ACCESSORIES									
Transfer Guides / Isolating Sections High Temp. Sleeves For 120 °C		Available			Available			Available	
APPLICATIONS		Shrouded DSL installations for EOT Cranes, Electric Hoists, Straight / Curved Monorails, Conveyors,Amusement Drives, Electric Trolleys,Transfer Cars, Automated storage systems, Material handling systems etc. Aluminium / SS Conductors for Corrosive atmosphere.							